

## PVC and Polybutylene Transition Fittings

### Polybutylene Transition Coupling



Part number	Description	Qty
U4008LF	1/2 in. PB x 1/2 in. CTS	6
U4016LF	3/4 in. PB x 3/4 in. CTS	6

### Polybutylene Transition Elbow



Part number	Description	Qty
U4248LF	1/2 in. PB x 1/2 in. CTS	6
U4256LF	3/4 in. PB x 3/4 in. CTS	6

### PVC Transition Coupling



Part number	Description	Qty
UIP4008	1/2 in. CTS x 1/2 in. PVC	6
UIP4016	3/4 in. CTS x 3/4 in. PVC	6
UIP4020	1 in. CTS x 1 in. PVC	3

### PVC Transition Slip Tee



Part number	Description	Qty
UIP363	1/2 in. CTS x 1/2 in. CTS x 1/2 in. PVC	3
UIP364	1/2 in. PVC x 1/2 in. PVC x 1/2 in. CTS	3
UIP371	3/4 in. CTS x 3/4 in. CTS x 3/4 in. PVC	3
UIP372	3/4 in. PVC x 3/4 in. PVC x 3/4 in. CTS	3
UIP375	1 in. CTS x 1 in. CTS x 1 in. PVC	3
UIP376	1 in. PVC x 1 in. PVC x 1 in. CTS	3

### PVC Slip Coupling



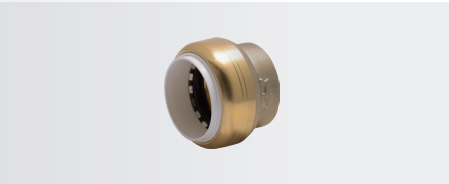
Part number	Description	Qty
UIP3008	1/2 in. PVC x 1/2 in. PVC	3
UIP3016	3/4 in. PVC x 3/4 in. PVC	3
UIP3020	1 in. PVC x 1 in. PVC	2

### PVC Male Connector



Part number	Description	Qty
UIP120	1/2 in. PVC x 1/2 in. MNPT	6
UIP134	3/4 in. PVC x 3/4 in. MNPT	6
UIP140	1 in. PVC x 1 in. MNPT	3

### PVC Cap



Part number	Description	Qty
UIP514	1/2 in.	12
UIP518	3/4 in.	12
UIP520	1 in.	12

### PVC Depth Gauge and Disconnect Clip



Part number	Description	Qty
UIP710	1/2 in.	12
UIP712	3/4 in.	12
UIP714	1 in.	6

## Flexible Water Heater & Softener Connectors

Used to connect water heaters to the hot and cold water lines. Ideal for working in tight spaces and connecting water heaters with existing pipes that may not line up.

### Stainless Steel Braided Water Heater Connector



Part number	Description	Qty
U3068FLEX12LF	1/2 in. x 3/4 in. FIP, 12 in.	12
U3068FLEX15LF	1/2 in. x 3/4 in. FIP, 15 in.	12
U3068FLEX18LF	1/2 in. x 3/4 in. FIP, 18 in.	12
U3068FLEX24LF	1/2 in. x 3/4 in. FIP, 24 in.	12
U3088FLEX12LF	3/4 in. x 3/4 in. FIP, 12 in.	12
U3088FLEX15LF	3/4 in. x 3/4 in. FIP, 15 in.	12
U3088FLEX18LF	3/4 in. x 3/4 in. FIP, 18 in.	12
U3088FLEX24LF	3/4 in. x 3/4 in. FIP, 24 in.	12

### Stainless Steel Corrugated Water Heater Connector



Part number	Description	Qty
SS3088FLEX12LF	3/4 in. x 3/4 in. FIP, 12 in.	12
SS3088FLEX18LF	3/4 in. x 3/4 in. FIP, 18 in.	12
SS3088FLEX24LF	3/4 in. x 3/4 in. FIP, 24 in.	12
SS3086FLEX24LF	3/4 in. x 1 in. FIP, 24 in.	6
SS3094FLEX24LF	1 in. x 1 in. FIP, 24 in.	6
SS3096FLEX24LF	1 in. x 3/4 in. FIP, 24 in.	6

### Stainless Steel Braided Water Heater Connector with Ball Valve



Part number	Description	Qty
U3068FLEX18BVLV	1/2 in. x 3/4 in. FIP, 18 in.	12
U3088FLEX18BVLV	3/4 in. x 3/4 in. FIP, 18 in.	12